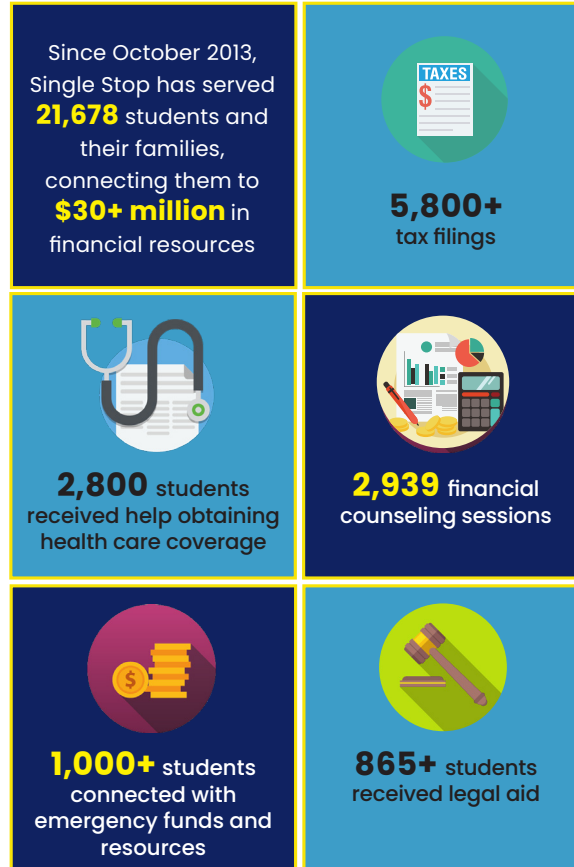




- **Financial Benefits Screening**
- **Free Tax Preparation**
- **Financial & Legal Counseling**
- **Health Care Enrollment Assistance**
- **Referral Services**

Students who utilize Single Stop services have a **HIGHER semester-to-semester persistence rate** and **grade point average**.

Source: Metis & Associates



AFFIRMATIVE ACTION STATEMENT

Community College of Philadelphia is an equal opportunity employer, and all qualified applicants will receive consideration for employment without regard to race, color, religion, sex, national origin, disability status, protected veteran status or any other characteristic protected by law.

082024



RESOURCES TO HELP YOU STAY ON YOUR PATH TO SUCCESS



At Single Stop, we can help you overcome economic barriers so you can continue with your education and move toward economic mobility.

Single Stop provides FREE and COMPREHENSIVE social and financial services:

BENEFITS SCREENING

Quick screening will provide you with information as to whether you qualify for federal/state benefits, such as food and nutrition programs (SNAP, WIC) and health insurance (CHIP, Medicaid). In addition, Single Stop staff will assist you in applying for benefits.

TAX PREPARATION

From January through April 15, you can meet with a certified tax preparer and have your taxes prepared for free. Tax preparers will determine if you and family members are eligible to receive the Earned Income, American Opportunity or Child Tax credits.

HEALTH CARE ENROLLMENT

Learn about different health care coverage options and get assistance enrolling in the Marketplace.

FINANCIAL EDUCATION

Financial services will help you establish and achieve your financial goals. You will receive assistance on building your assets and debt management.

LEGAL COUNSELING

Attorneys and paralegals will provide guidance on public benefits, housing, utilities, and immigration issues.

REFERRAL SERVICES

Single Stop staff will also assess your needs and make referrals to other resources on campus and in the community.



Contact Single Stop

Main Campus

Mint Building, Room M1-21
singlestop@ccp.edu
215.516.3710



Get screened for benefits and learn about local resources at ccp.edu/singlestop.

You may be eligible to receive additional financial assistance!